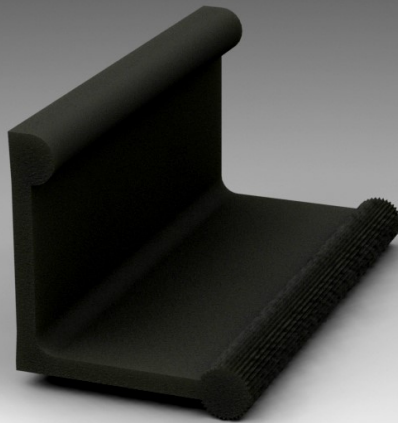


Waterstop Type W2L

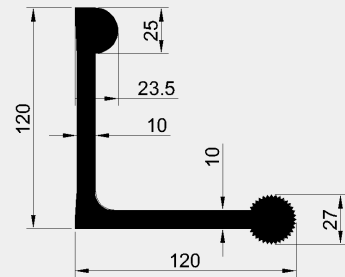


Extruded elastomer waterstop profile

TYPICAL APPLICATION

culverts, retaining walls, bridge abutments, foundations, basements, renovation works

Trelleborg W series are typically used in new build constructions for construction joints where a cast-in profile can not be used, or when a watertight connection between existing and new structure is required. Also a hybrid model is available which can be used to make a watertight connection between an existing structure and a new built structure.



ADVANTAGES

Easy to install, highest performance, movement in all directions possible, bespoke frame design possible, hybrid models available.

TECHNICAL PROPERTIES

- > Gross dimensions 120 x 120 mm
- > Weight 3.3 kg/m
- > Materials SBR
- > Elongation at break $\geq 375\%$
- > Tensile strength $\geq 17.1 \text{ N/mm}^2$
- > Hardness $60 \pm 5 \text{ Shore A}$
- > Capacity -

Product specifications and performance may be subject to project specific conditions or local design constraints. For advice on product performance, application and installation, construction possibilities and technical queries contact Trelleborg Ridderkerk B.V. at trelleborg.com/marine-and-infrastructure, marine_infra@trelleborg.com or call +31 (0)180 495 555